

# Secure Temp® ASHT

1" Insulated Stainless Steel, High-Temperature Chimney



[www.securitychimneys.com](http://www.securitychimneys.com)  
800-361-4909 (US) 800-667-3387 (Canada)

# Secure Temp® ASHT

The Secure Temp ASHT from Security Chimneys is one of the most extensively used factory-built venting systems in North America. It is specially developed for use with oil-, gas-, coal- and wood-burning appliances.

## CERTIFICATION

The Secure Temp ASHT high-temperature chimney is certified by Intertek Testing (Warnock Hersey) to UL-103HT standards for all diameters of 5, 6, 7, 8 and 10 inches. Secure Temp ASHT has a temperature rating of 650°C (1200°F); max. continuous, 760°C (1400°F) brief forced fired; and 1150°C (2100°F) 3 x 30 minutes, tested.

## A TRADITION OF EXCELLENCE

For over 50 years, Security Chimneys International, a Canadian company, has been an innovator in the venting field and a market leader. Instrumental in the company's growth has been an ongoing focus on product improvement and the introduction of innovative products. This drive for excellence has given rise to the Secure Temp ASHT, one of the most popular lines of venting products in North America. This high-quality product ensures that end-users benefit from maximum safety and proven corrosion protection.

## INNOVATIVE COMPOSITION

The use of stainless steel, selected for its resistance to high temperatures and corrosion, lends outstanding durability to the Secure Temp ASHT high-temperature chimneys. It is also available with an aluminum-zinc coats steel casing in 6-, 7-, and 8-inch inner diameters (I.D). Chimneys in diameters of 5 to 10 inches feature 1 inch of superior-quality, high-density Secura Plus insulation. This exclusive insulation keeps the temperature of the outer casing relatively low, keeping safety features as simple as possible.

## INSTALLATION HAS NEVER BEEN EASIER

All Secure Temp ASHT high-temperature chimneys, regardless of diameter, can be installed as close as 2 inches from combustible materials. The ASHT (5- to 10-inch diameters) also feature fast and easy Twist-Lock assembly. Lengths and universal fittings fit together and lock into place by twisting one-eighth of a turn. No other part is needed to ensure the chimney's structural stability, keeping installation time to a minimum.



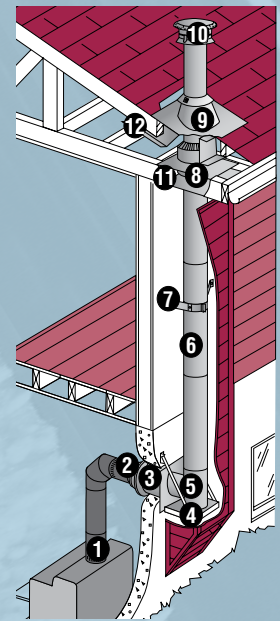
# SECURITY CHIMNEYS SECURE TEMP ASHT VENT SYSTEM FOR CHIMNEYS



- 1 Twist-Lock stainless steel coupler system with 1-inch overlap**
  - No screws or other attachments required
  - Fast and easy installation with one-eighth of a turn
- 2 Stainless steel inner lining**
  - Thin inner lining for immediate heating
  - Provides smoother surface
  - Little restriction of flue gases even with an elbow
  - Outstanding corrosion resistance
- 3 One inch of exclusive Secura Plus insulation**
  - No shifting of the insulation
  - Keeps cooling of gas temperature minimal, which stabilizes at high temperatures
  - Reduces condensation and creosote buildup
  - Avoids corrosion caused by acid condensation from rain
  - Low surface temperature
  - Increases appliance performance
  - Minimum 2-inch safety clearance to combustible materials in all diameters
- 4 Fast venting of combustion products**
  - Delivers a stable and powerful draft
- 5 Stainless steel outer casing**
  - Supports the structural load
- 6 Inner liner attached only to the male coupler**
  - Free-floating inner wall means no need for expansion joints
  - Unhindered expansion with rising temperatures
- 7 Lightweight – 6-inch diameter, 5.2 lb. per linear foot**
  - Delivers a more user-friendly design
  - For support, see “Loadbearing Capacity” chart on page 4.

### INSTALLATION KEY

- 1 Black Stove Pipe
- 2 Decorative Collar or Finishing Cone
- 3 Insulated Wall Thimble
- 4 Tee Support
- 5 Insulated Tee
- 6 Insulated Length
- 7 Universal Wall Band
- 8 Insulated Attic Radiation Shield
- 9 Adjustable Roof Flashing w/ Storm Collar
- 10 Rain Cap
- 11 Firestop
- 12 Radiation Shield Plates
- 13 Finishing Support
- 14 Base Tee
- 15 Floor Support
- 16 Universal Roof Support
- 17 Vented Flat Roof Flashing
- 18 Storm Collar

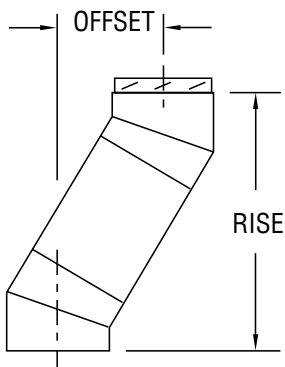


Exterior installation in an accessible chase.

### Offset and Rise Calculation

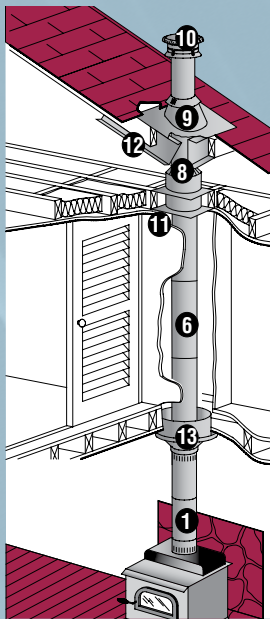
The following steps will help determine the lengths required for an installation:

1. Determine the offset required in view of the obstacles that must be avoided.
2. Refer to the "Offset/Rise Chart" to determine the elbows required as well as the insulated lengths needed.
3. Check the corresponding offset height dimensions.

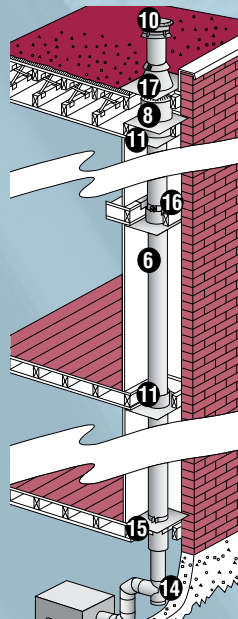


### ELBOW OFFSET & RISE CHART

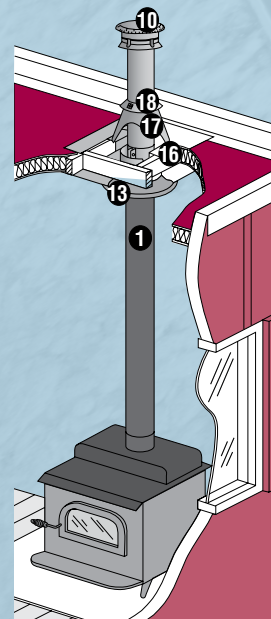
		One length between elbows							
Angle	Dia.	8	12	18	24	36	48		
15°	All	Offset (in.)	3-5/16"	4-5/16"	5-7/8"	7-7/16"	10-1/2"	13-5/8"	
		Rise (in.)	15-11/16"	19-9/16"	25-3/8"	31-3/16"	42-3/4"	54-3/8"	
			Two lengths between elbows						
			8 & 48	12 & 48	18 & 48	24 & 48	36 & 48	48 & 48	
			Offset (in.)	15-3/8"	16-7/16"	18"	19-1/2"	22-5/8"	25-3/4"
			Rise (in.)	60-15/16"	64-13/16"	70-9/16"	76-3/8"	87"	99-9/16"
30°	All	One length between elbows							
		Angle	Dia.	8	12	18	24	36	48
			Offset (in.)	7-7/16"	9-7/16"	12-7/16"	15-7/16"	21-7/16"	27-7/16"
			Rise (in.)	20"	23-1/2"	28-11/16"	33-7/8"	44-1/4"	54-11/16"
			Two lengths between elbows						
			8 & 48	12 & 48	18 & 48	24 & 48	36 & 48	48 & 48	
		Offset (in.)	30-13/16"	32-13/16"	35-13/16"	38-13/16"	44-13/16"	50-13/16"	
		Rise (in.)	60-9/16"	64"	69-1/4"	74-7/16"	84-13/16"	95-1/4"	



Interior installation on a wood stove using a finishing support.



Interior installation to a furnace.



Interior installation to a stove in a mobile home.

## Installation

Creosote buildup in a chimney can cause fires capable of reaching temperatures of up to 2100°F. The ASHT, with its double-wall all-stainless steel chimney and exclusive Secura Plus insulation, minimizes heat loss through the chimney walls, and can withstand that intense heat.

The free-floating inner lining is attached only to the male coupler at the top, expanding and contracting freely with temperature fluctuations. The external casing of the Secure Temp ASHT carries the structural load.

### LOADBEARING CAPACITY

Ø int.	Maximum height				
	5"	6"	7"	8"	10"
Floor support	32'	32'	32'	32'	32'
Tee support	63'	63'	55'	48'	39'
Adjust. tee/wall support	63'	63'	55'	48'	39'
Roof support	42'	34'	27'	24'	20'
Offset support	-	28'	24'	20'	14'
Sq. cathedral support	-	60'	50'	45'	35'
Finishing support	-	75'	65'	59'	-
Adj. square support w/ framing arms and coupler	-	27'	22'	-	-
Offset/Wall support	-	28'	24'	20'	14'
Reduced Clearance support	-	60'	50'	45'	-

### SIZE OF OPENINGS\*

Ø int.	Hole size (framing)				
	5"	6"	7"	8"	10"
Floor support	11-3/8"	12-3/8"	13-3/8"	14-3/8"	16-3/8"
Sq. cathedral support	-	14-3/8"	14-3/8"	14-3/8"	-
Finishing support	14-3/8"	14-3/8"	14-3/8"	14-3/8"	-
Roof support*	11-3/8"	12-3/8"	13-3/8"	14-3/8"	16-3/8"
Wall thimble	11-3/8"	12-3/8"	13-3/8"	14-3/8"	16-3/8"
Firestop	11-3/8"	12-3/8"	13-3/8"	14-3/8"	16-3/8"
Reduced Clearance support	-	10"	11"	12"	-

### SECURE TEMP ASHT GENERAL SPECIFICATIONS

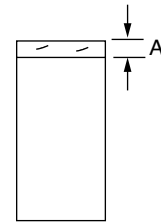
Ø int.	Ø ext.	Insulation thickness	Weight	Twist-Lock assembly	Clearance
5"	7"	1"	4.1 lb./ft.	YES	2"
6"	8"	1"	5.2 lb./ft.	YES	2"
7"	9"	1"	6.4 lb./ft.	YES	2"
8"	10"	1"	7.2 lb./ft.	YES	2"
10"	12"	1"	8.9 lb./ft.	YES	2"

# Lengths

## Insulated Lengths

Five diameters and six standard effective lengths featuring a 1/8-turn Twist-Lock assembly. Available in 6", 7", and 8" I.D. with aluminum-zinc coated outer casing (GL).

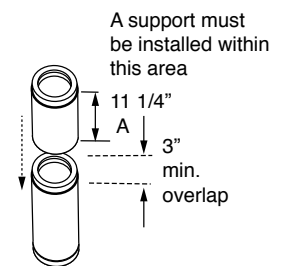
Ref. L							
Ø int.	5"	6"	7"	8"	10"		
Ø ext.	7"	8"	9"	10"	12"		
Lb./ft.	4.1	5.2	6.4	7.2	8.9		
A	1-1/4"	1-1/4"	1-1/4"	1-1/4"	1-1/4"		
Length Available		8"	12"	18"	24"	36"	48"
Effective Length		7"	11"	17"	23"	35"	47"



## Adjustable Length 12"

Used in combination with straight insulated lengths, the adjustable length makes it possible to fit a Secure Temp length perfectly. **IMPORTANT:** The adjustable length is not designed as a load-bearing component. Its vertical installation requires an appropriate support on the section above it to bear the weight of the remaining installation. Available in 6", 7", and 8" I.D. with aluminum-zinc coated outer casing (GL).

Ref. LA					
Ø ext.	5"	6"	7"	8"	10"
A	11-1/4"	11-1/4"	11-1/4"	11-1/4"	11-1/4"

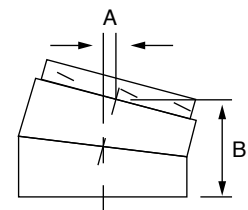


# Venting Elbows

## 15° Insulated Elbow

Allows the 15° offset of a chimney. Designed to bypass an obstacle, such as a joist. A maximum of two offsets (4 elbows) is allowed. Available in 6", 7", and 8" I.D. with aluminum-zinc coated outer casing (GL).

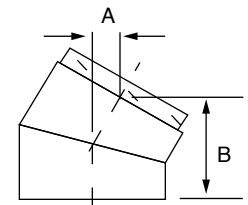
Ref. E15					
Ø int.	5"	6"	7"	8"	10"
Ø ext.	7"	8"	9"	10"	12"
A	1/2"	1/2"	1/2"	1/2"	1/2"
B	4-1/2"	4-1/2"	4-1/2"	4-1/2"	4-1/2"



## 30° Insulated Elbow

Allows the 30° offset of a chimney. Designed to bypass an obstacle, such as a joist. A maximum of two offsets (4 elbows) is allowed. Available in 6", 7", and 8" I.D. with aluminum-zinc coated outer casing (GL).

Ref. E30					
Ø int.	5"	6"	7"	8"	10"
Ø ext.	7"	8"	9"	10"	12"
A	2"	2"	2"	2"	2"
B	7-1/2"	7-1/2"	7-1/2"	7-1/2"	7-1/2"

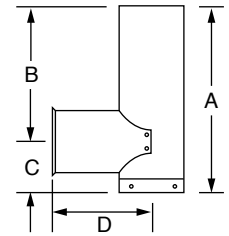


# Venting Tees

## Base Tee

Located at the base of the chimney, it makes it possible to connect the chimney to a gas- or oil-burning appliance. It is recommended for interior installations only and must be attached to a flue extension. The galvanized steel base tee comes complete with a tee cap to provide access for inspection and cleaning. Available in stainless (TBS).

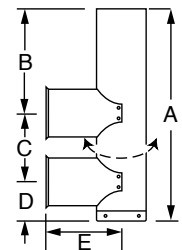
Ref. TB / Ref. TBS				
Ø int.	6"	7"	8"	10"
A (TB)	23"	24"	25"	27"
B	18"	18-1/2"	19"	20"
C	5"	5-1/2"	6"	7"
D	5-1/2"	6"	6-1/2"	7-1/2"



## Base Tee for Twin Connections

This component makes it possible to connect two appliances, such as a furnace and a water heater to the SecureTemp ASHT chimney. The galvanized steel base tee for twin connections comes with a tee cap (TC) to provide access for inspection and cleaning.

Ref. TBD				
Ø int.	6"	7"	8"	10"
A	31"	33"	35"	39"
B	18"	18-1/2"	19"	20"
C	5"	5-1/2"	6"	7"
D	5-1/2"	6"	6-1/2"	7-1/2"
E	8"	9"	10"	12"

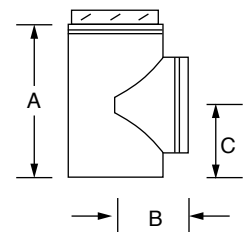


## Insulated Tee

Located at the base of the chimney, it provides the horizontal connection to the appliance. It is recommended for installations where a connector must pass through an exterior wall because its insulation prevents the cooling of chimney gases. An insulated tee cap (TCS) is included, which allows easy access for maintenance and inspection.

The insulated tee cap (TCS) must be secured to the flue extension of the tee support or adjustable tee support. Also available in aluminum-zinc outer casing (GL).

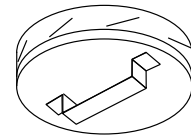
Ref. TI					
Ø int.	5"	6"	7"	8"	10"
Ø ext.	7"	8"	9"	10"	12"
A	9-1/2"	10-1/2"	11-3/4"	13"	15"
B	4-3/4"	5-1/4"	5-1/4"	6-1/4"	7-1/4"
C	5-1/2"	6"	6-1/2"	7-1/4"	8-1/4"



# Tees

## Insulated Tee Cap (Twist-Lock)

Equipped with a Twist-Lock system, it makes it possible to seal the base of an insulated tee when an adjustable wall support (SME) is used. It can be removed, providing easy access for chimney maintenance and inspection. Its insulation prevents the cooling of chimney gases, especially in exterior installations.



### Ref. TCI

Ø int.	5"	6"	7"	8"	10"
--------	----	----	----	----	-----

## Drain Tee Cap

Fitted at the base of an insulated tee, it makes it possible to collect and drain rainwater and condensates. The drain tee cap connects to a drain (NPT 0 1"). Removable, it provides easy access for chimney maintenance or inspection. Must be combined with an adjustable wall support only.



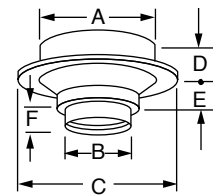
### Ref. TCP

Ø int.	6"	7"	8"	10"
--------	----	----	----	-----

# Supports

## Finishing Support

This part supports the chimney from a ceiling. Designed to connect to both double-wall and single-wall stove pipe, it is enhanced by a decorative black finish. Fits between standard 16"-on center joists. Must be attached to a frame built from the joists. (Refer to chart on pg. 5 for load-bearing capacity and size of openings.) A finishing support is also available with a removable collar for 5" (5SFCA) and 6" (6SFCA) installations.



### Ref. SFC

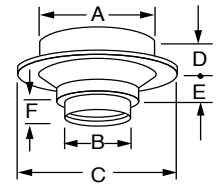
Ø int.	5"	6"	7"	8"
A	12"	12"	14-3/8"	14-3/8"
B	5-1/4"	6-15/64"	7-1/4"	8-1/4"
C	20"	20"	20"	20"
D	5-1.2"	5-1/2"	5-1/2"	5-1/2"
E	3"	3"	3"	3"
F	2"	2"	2"	2"



# Supports

## Finishing Support with Removable Trim Collar

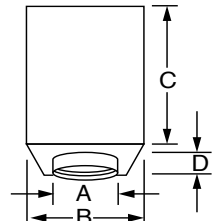
This part supports the chimney from a ceiling. Designed to connect to both double-wall and single-wall stove pipe, it is enhanced by a decorative black finish. Fits between standard 16"-on-center joists. Must be attached to a frame built from the joists. (Refer to chart on page 4 or 8 for loadbearing capacity and size of openings.) This finishing support has a removable trim collar for new construction installation.



Ref. SFCA		
Ø int.	5"	6"
A	12"	12"
B	5-1/4"	6-15/64"
C	20"	20"
D	5-1/2"	5-1/2"
E	3"	3"
F	2"	2"

## Insulated Reduced Clearance Support

Use with flat, vaulted or cathedral ceilings. Certified to reduce clearance to combustibles from the usual 2" (per side) down to a 1" (per side) for all diameters. This allows for a smaller hole to be cut in the ceiling. Can connect to both double-wall stove pipe or single-wall stove pipe with included adapter. Functions as both an Attic Insulation Shield and Finishing Support. An adjustable black finish trim insulation pad and collar are included. (Refer to chart on page 4 or 8 for loadbearing capacity).



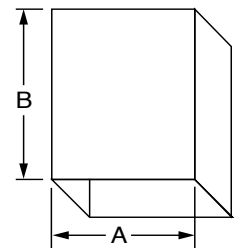
Ref. RCS			
Ø int.	6"	7"	8"
A	6-15/64"	7-1/4"	8-1/4"
B	10"	11"	12"
C	24"	24"	24"
D	2"	2"	2"

## Reduced Clearance Support Extension

This part is designed to extend the height of the Insulated Reduced Clearance Support by 22" when the pitch of the roof is steep.

Fits all diameters.

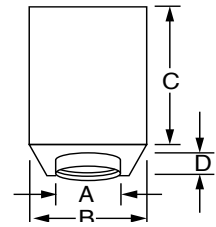
Ref. SE			
Ø int.	6"	7"	8"
A	10"	11"	12"
B	24"	24"	24"



# Supports

## Square Cathedral Support 24"

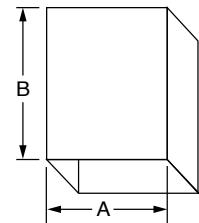
This support is used with a chimney that is passing through an angled (cathedral) ceiling. Fits between standard 16"-on center joists. Designed to connect to both double-wall and single-wall stove pipe. An adjustable black finish trim is included. (Refer to chart on page 4 or 8 for loadbearing capacity).



Ref. SSC24			
Ø int.	6"	7"	8"
A	6-15/64"	7-1/4"	8-1/4"
B	12"	14-3/8"	14-3/8"
C	24"	24"	24"
D	2"	2"	2"

## Square Cathedral Support Extension

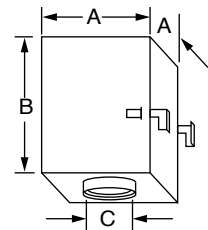
This part is designed to extend the finish of the Square Cathedral Support when the pitch of the roof is steep. Must be attached to the Square Cathedral Support. Fits all diameters.



Ref. PS24	
A	14-3/8"
B	24"

## Adjustable Square Support, Black with Framing Arms

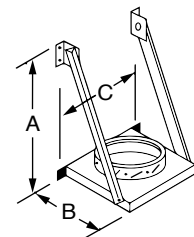
This part has the same use as the SFC or SSC, but has adjustable arms that extend to reach framing for support. It can be installed between 16"-on center joists with 2-1/2" of free play to eliminate the need for elbows. No framing is required.



Ref. SSAC		
Ø int.	5"	6"
A	12"	12"
B	17"	17"
C	5"	6"

## Tee Support

This part supports the chimney at the base of the installation. It is designed with a male coupler to accommodate the first section of the chimney. This tee support is made of galvanized steel and must be installed with the insulated tee cap (TCS) included with the insulated tee.



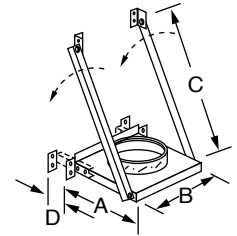
Ref. SM				
Ø int.	6"	7"	8"	10"
A	19"	19"	19"	16"
B	13"	13"	13"	16"
C	16"	16"	16"	16"

# Supports

## Adjustable Tee Support

This part supports the chimney at the base of the installation, functioning similarly to the tee support (SM) but with an adjustable base to provide additional wall clearance as needed. This tee support must be installed with the insulated tee cap (TCS) included with the insulated tee.

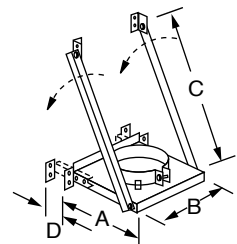
Ref. SMA					
Ø int.	5"	6"	7"	8"	10"
A	11-1/2"	11-1/2"	15-1/2"	15-1/2"	15-1/2"
B	15"	15"	15"	15"	15"
C	26-3/4"	26-3/4"	26-3/4"	26-3/4"	26-3/4"
D	0 to 5"	0 to 5"	0 to 5"	0 to 5"	0 to 5"



## Adjustable Wall Support

This part supports the chimney at the base of the installation or along a wall or other vertical surface serving as an intermediate support. It comes with a tightening collar that locks around the chimney and is secured by two self-tapping screws (included). The collar rests on a horizontal plate. When used as a base support, it lends itself to the addition of a Twist-Lock insulated tee cap (TCI) or drain tee cap (TCP). (Refer to the chart on pg. 4 for load-bearing capacity.)

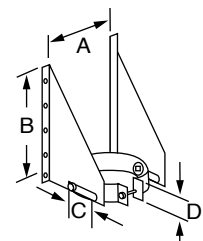
Ref. SME					
Ø int.	5"	6"	7"	8"	10"
A	13"	13"	13"	13"	16"
B	16"	16"	16"	16"	16"
C	26-3/4"	26-3/4"	26-3/4"	26-3/4"	26-3/4"
D	0 to 5"	0 to 5"	0 to 5"	0 to 5"	0 to 5"



## Universal Offset/Wall Support

This part is designed to support the chimney on a vertical wall. The triangular plates allow a 2" to 4" lateral adjustment of the support to the vertical surface. This support can also be used as a wall support above the insulated tee. When used as a tee support, it lends itself to the addition of a Twist-Lock insulated tee cap (TCI) or drain tee cap (TCP).

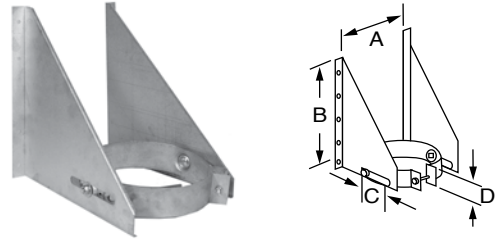
Ref. SO					
Ø int.	5"	6"	7"	8"	10"
A	8-1/2"	9-1/2"	10-1/2"	11-1/2"	13-1/2"
B	12"	12"	12"	12"	12"
C	2-3/4"	2-3/4"	2-3/4"	2-3/4"	2-3/4"
D	2"	2"	2"	2"	2"



# Supports

## Wall Support

This part is designed to support the chimney on a vertical wall. The triangular plates allow a 2" to 6" lateral adjustment of the support to the vertical surface. When used as a tee support, it lends itself to the addition of a Twist-Lock insulated tee cap (TI or XTCL). (Refer to the chart on page 4 or 8 for loadbearing capacity).



Ref. S0-1		
Ø int.	6"	7"
A	9-1/2"	10-1/2"
B	11-1/2"	11-1/2"
C	4"	4"
D	3"	3"

## Universal Roof Support

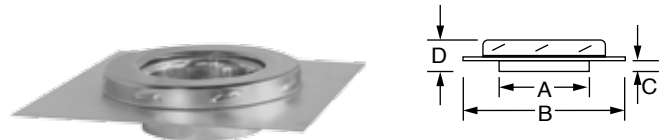
This complementary support is usually attached to a roof structure. It is designed to support the chimney: from the roof, adjusting to any roof pitch; above an offset; when the chimney height exceeds the load-bearing capacity of the primary support. Two adjustable plates screwed to the structure adapt to the pitch of the roof. A tightening collar is attached and locks around the chimney. It is secured by self-tapping screws. (Refer to the chart on pg. 4 for load-bearing capacity.)



Ref. ST					
Ø int.	5"	6"	7"	8"	10"
A	8"	8"	8"	8"	8"
B	4"	4"	4"	4"	4"
C	2"	2"	2"	2"	2"

## Anchor Plate

This part is attached to a masonry or metal-casing fireplace to provide a proper connection to the chimney. It can also serve to connect a furnace. (Refer to the chart on pg. 4 for load-bearing capacity.)



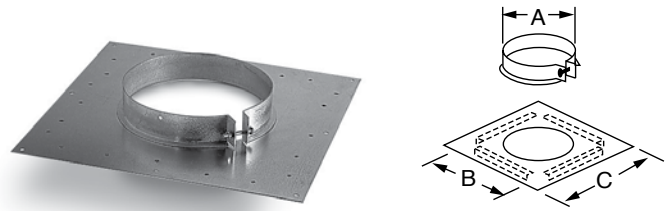
Ref. SP					
Ø int.	5"	6"	7"	8"	10"
A	5"	6"	7"	8"	10"
B	12"	12"	12"	12"	14"
C	2"	2"	2"	2"	2"
D	3"	3"	3"	3"	3"

# Supports

## Floor Support

Used mainly from a basement, this part supports the chimney on a slab, floor, or joist and also acts as a firestop. It makes it possible to maintain a 2" clearance between the chimney's outer casing and combustible materials in its path. It includes a tightening collar that locks around the chimney and is secure by self-tapping screws (included). The collar rests on a horizontal plate screwed or nailed to the floor or slab. It can also serve as an intermediate support. (Refer to the chart on pg. 4 for load-bearing capacity.)

Ref. SD					
Ø int.	5"	6"	7"	8"	10"
A	7"	8"	9"	10"	12"
B	11"	12"	13"	14"	20"
C	16"	16"	16"	18"	18"



## Flue Extension

Fitted to the base of the first chimney length, this component makes it possible to extend the inner casing, thereby facilitating the attachment of the stove pipe or other type of connector. It can also be attached directly to the appliance outlet as a chimney adapter. The crimped end of this component is slightly tapered for easier assembly.

Ref. UP					
Ø int.	5"	6"	7"	8"	10"
A	3"	3"	3"	3"	3"
B	5"	6"	7"	8"	10"

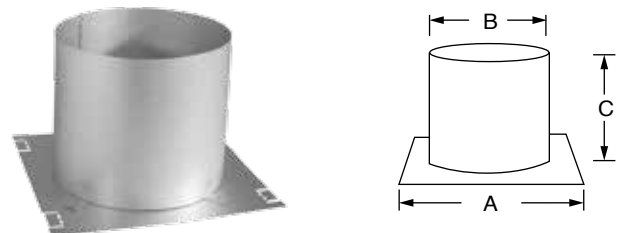


# Shields

## Radiation Shield

Protects combustible materials when the chimney passes through a floor or an intermediate ceiling. It ensures a 2" safety clearance between the chimney's outer casing and surrounding combustibles. When passing through a ceiling, it is to be installed from the underside of the ceiling. (Required in some jurisdictions in replacement of the firestop.)

Ref. RS					
Ø int.	5"	6"	7"	8"	10"
A	16"	16"	16"	16"	16"
B	10"	11"	12"	13"	15"
C	10"	10"	10"	10"	10"

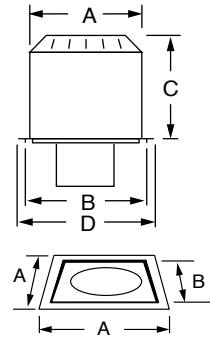


# Shields

## Two-Piece Insulated Attic Radiation Shield

Also referred to as an insulation shield, it protects combustible materials when a chimney passes through an attic. It is imperative that it be installed overside from the attic. Its cone shape keeps insulation from seeping between the outer casing and the firestop. It also maintains a 2" clearance from combustible materials. Insulated to prevent cold air intrusion. Storm collar included.

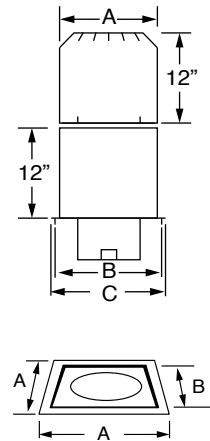
Ref. RSA2					
Ø int.	5"	6"	7"	8"	10"
A	11"	12"	13"	14"	16"
B	11"	12"	13"	14"	16"
C	12"	12"	12"	12"	12"
D	16"	16"	16"	16"	18"



## Adjustable Insulated Attic Radiation Shield

Also referred to as an insulation shield, this has the same features as the two-piece insulated attic radiation shield but its height is adjustable from 12" to 22". Insulated to prevent cold air intrusion. Storm collar included.

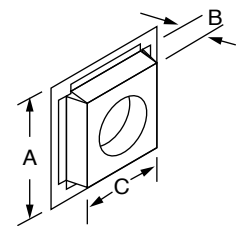
Ref. ARSA					
Ø int.	5"	6"	7"	8"	10"
A	11"	12"	13"	14"	16"
B	11"	12"	13"	14"	16"
C	16"	16"	16"	16"	16"



## Insulated Radiation Shield

Designed for use with wood-burning stoves or fireplaces certified for use with the SecureTemp ASHT, it should be used where the chimney passes through a ceiling or exterior opening where insulation is required. It must be used in combination with an attic radiation shield when passing through an attic. Recommended for use in cold regions.

Ref. RSI			
Ø int.	7"	8"	10"
A	16"	16"	18"
B	3"	3"	3"
C	13"	13"	15"

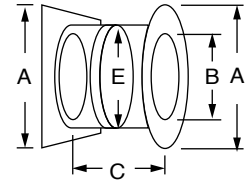


# Shields

## Insulated Wall Thimble

Designed to protect surrounding combustible materials when a chimney crosses through a wall horizontally, this shield can be adjusted from 7" to 12-1/2" to adapt to the thickness of the wall opening. A decorative plate painted in matte black provides an interior finish. Insulated to prevent cold air intrusion.

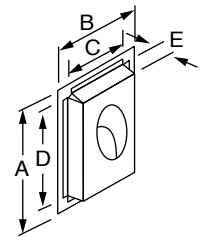
Ref. RSM					
Ø int.	5"	6"	7"	8"	10"
A	17"	17"	20"	20"	20"
B	7-1/4"	8-1/4"	9-1/4"	10-1/4"	12-1/4"
C	← 7-1/2" to 12-1/2" →				
D	14"	16"	16"	16"	18"
E	11"	12"	13"	14"	16"



## 30° Insulated Wall Radiation Shield

This part is to be used only with the Security wood-burning fireplace line and others that have been certified for use with the chimney. It has been designed for use when the chimney passes through a wall at an angle.

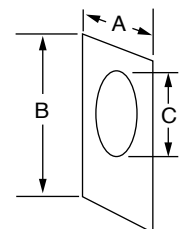
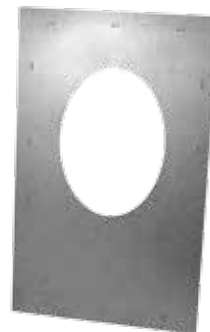
Ref. RSM130				
Ø int.	6"	7"	8"	10"
A	34-3/4"	37-1/4"	39-1/4"	42-13/16"
B	15-1/8"	16-1/8"	17-1/8"	18-1/8"
C	17-1/8"	18-1/8"	19-1/8"	20-1/8"
D	36-3/4"	39-1/4"	41-1/4"	44-13/16"
E	3"	3"	3"	3"



## Angled Firestop 30°

This angled firestop is to be used only with the Security wood-burning fireplace line and others that have been certified for use with the chimney.

Ref. RSM30				
Ø int.	6"	7"	8"	10"
A	15-3/8"	16-5/8"	17-5/8"	19-3/8"
B	35-1/4"	37-3/4"	39-3/4"	43-5/16"
C	13-5/16"	14-9/16"	15-9/16"	17-3/8"

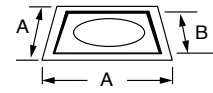


# Shields

## Firestop

Designed for use below each combustible floor the chimney passes through.

Ref. BF					
Ø int.	5"	6"	7"	8"	10"
A	14"	16"	16"	16"	18"
B	11"	12"	13"	14"	16"

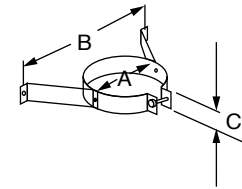


# Braces

## Universal Wall Band

Designed for use on an interior or exterior wall, it serves to stabilize the chimney while providing the required clearance from the combustible surface. The use of wall bands at maximum intervals of 8' is recommended. Also available in 6" fix configuration (6BM).

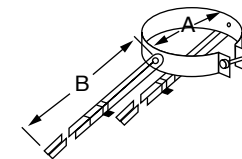
Ref. BM					
Ø int.	5"	6"	7"	8"	10"
A	7"	8"	9"	10"	12"
B	19"	21"	23"	25"	29"
C	2"	2"	2"	2"	2"



## Universal Roof Brace

Designed to stabilize a chimney extending from 60" to 115" beyond the roof, or when a chimney is exposed to high winds. This part is supplied with tightening collar and adjustable legs.

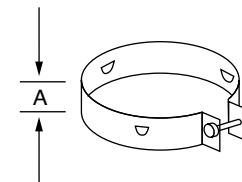
Ref. BS2					
Ø int.	5"	6"	7"	8"	10"
A	7"	8"	9"	10"	12"
B	← 60" to 115" →				



## Guy Wire Band

Attached to the outer casing of the chimney (secured by bolts), it is designed to hold 3 guy wires. It is recommended for chimneys exceeding the roof by 5' to 13' maximum. Wire not included.

Ref. BH				
Ø int.	6"	7"	8"	10"
A	2"	2"	2"	2"



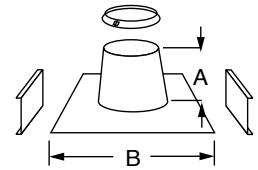


# Flashings

## Flat Roof Flashing

This component seals a chimney length when passing through a flat roof and comes complete with a storm collar.

Ref. FR					
Ø int.	5"	6"	7"	8"	10"
A	7-1/2"	7-1/2"	7-1/2"	7-1/2"	7-1/2"
B	20"	24"	24"	24"	24"

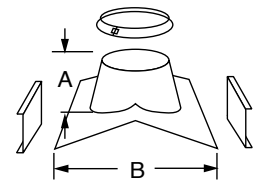


## Peak Roof Flashing

This component is required for chimney installations passing through the roof peak. It is available in two models:

- Peak roof: 1/12 to 7/12 FPR
- Peak roof: 8/12 to 12/12 FPBR

Ref. FPR/FPBR				
Ø int.	6"	7"	8"	10"
Ref. FPR				
A	3-5/8"	3-5/8"	3-5/8"	3-5/8"
B	12"	13"	13-1/2"	15"
Ref. FPBR				
A	5"	4"	3-1/4"	1-1/2"
B	14"	14"	14"	14"



## Adjustable Roof Flashing

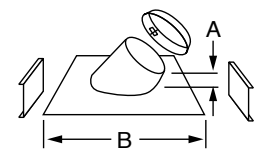
This part is required to accommodate sloped roof installations. Available in five versions to adapt to the needs of the following roof slopes:

- 1/12 to 7/12 pitch: FAR
- 8/12 to 12/12 pitch: FBR
- 12/12 to 21/12 pitch: FBBR

Also available in aluminum malleable base plate in 6", 7" and 8" I.D. (Ref: FAAR, FBAR)

Ref. FAR/FBR/FBBR/FAAR/FBAR					
Ø int.	5"	6"	7"	8"	10"
Ref. FAR					
A	6"	6"	6"	6"	6"
B	24"	24"	24"	24"	24"
Ref. FBR					
A	6"	6"	4-3/8"	3-7/8"	3-7/8"
B	24"	24"	24"	24"	30"

Ref. FBBR				
A	6-1/4"	6-1/4"	6-1/4"	6-1/4"
B	36"	36"	36"	42"
Ref. FAAR				
A	6"	6"	6"	
B	36"	36"	36"	
Ref. FBAR				
A	6"	6-3/8"	6-7/8"	
B	36"	36"	36"	



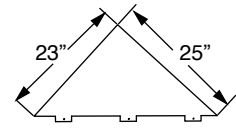
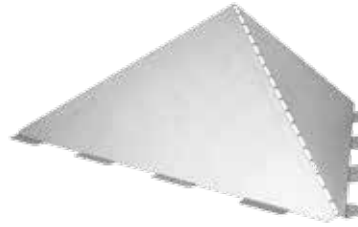
# Flashings

## Snow Diverter

Use to divert snow around chimney, vent and roof flashing. Bendable attachment flanges allow it to mount on any roof slope. Constructed with paintable galvanized material. Ships flat for easy assembly.

### Ref. FSD

Universal piece fits all diameters.

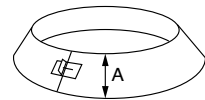


## Storm Collar

Designed to fit over flashings, it provides a weather-tight seal. It is automatically supplied with any roof flashings.

### Ref. FC

Ø int.	5"	6"	7"	8"	10"
A	5"	5"	5"	5"	5"

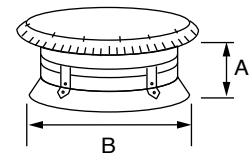


## Rain Cap

Attached to the top of the chimney, it effectively prevents rain, snow and leaves from entering the opening. Check local codes to determine if a spark arrester (PE) is required.

### Ref. CC

Ø int.	5"	6"	7"	8"	10"
A	4"	4"	4"	4-3/4"	4-3/4"
B	12-1/4"	12-1/4"	12-1/4"	15-1/2"	15-1/2"



## Spark Arrester Band

This spark arrester band is wrapped around the rain cap, preventing sparks from falling onto the roof or animals from entering into the chimney.

### Ref. PE

Universal piece fits all diameters.

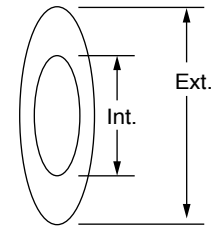


# Decorative Accessories

## Decorative Trim

The use of this decorative trim provides a flawless finish when a chimney must pass through a ceiling or any wall.

Ref. PF			
Ø int.	6"	7"	8"
Ø Ext.	17"	20"	20"

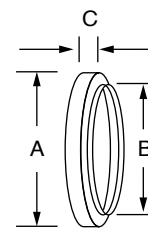


## Decorative Collar Single-Wall

This component provides a finish between the Secure Temp chimney's female coupler and single-wall stove pipe.

Note: For double-wall stove pipe connection, see our "DL" catalog section.

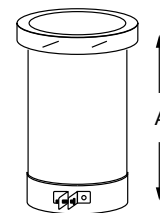
Ref. PB			
Ø int.	6"	7"	8"
A	8"	9"	10"
B	6"	7"	8"
C	1"	1"	1"



## Black Pipe Adaptor

This component is recommended for connecting a standard black pipe to the Secure Temp chimney when a longer extension length is required. A finishing collar is supplied.

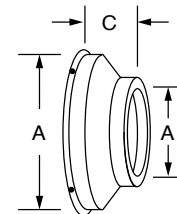
Ref. PA			
Ø int.	6"	7"	8"
A	12"	12"	12"



## Finishing Cone

When the chimney passes through an exterior wall, a finishing cone may be used to conceal the protrusion of the insulated length (5") inside the dwelling. A flue extension must be used to ensure a perfect connection between the chimney and the double-wall black connector.

Ref. PD			
Ø int.	6"	7"	8"
A	12"	14-3/8"	14-3/8"
B	6-1/4"	7-1/4"	8-1/4"
C	5-1/2"	5-1/2"	5-1/2"



# Kits

## Wall Support Kit for 6" & 7" Diameters

Kit includes:

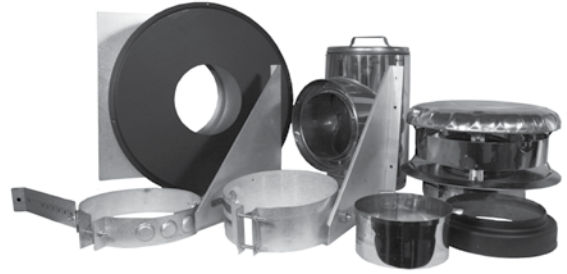
Insulated tee, twist lock tee cap, adjustable tee support, insulated wall radiation shield, flue extension, double wall decorative collar, wall band, and rain cap.

Can use for through the wall installations.

**Pipe not included.**

Ref. 6WSK, 7WSK

Only available in 6" & 7" Diameters.



## Exterior Kit for 6" & 7" Diameters

Kit includes:

Insulated tee with insulated tee cap, adjustable tee support, insulated wall thimble, decorative collar single wall, flue extension, and decorative collar double wall, spark arrestor, rain cap, and wall band.

Ref. 6EK-2, 7EK

Only available in 6" & 7" Diameters.



# Kits

---

## Interior Kit

Kit includes:

Finishing support with coupler, 2 piece attic insulation shield, and rain cap.

Use for interior installations only.

Ref. 6IK-1

Only available in 6" Diameter.



## Interior New Construction Kit

Kit includes:

Finishing support with removable outer trim collar, adjustable insulated attic radiation shield, and rain cap.

Use for new home construction with through the roof installation.

Ref. 6IKNC

Only available in 6" Diameter.





# Limited Lifetime Warranty

This Security Chimneys International, Ltd. (SCIL) Limited Lifetime Warranty warrants your residential vent and/or chimney system to be free from defects in material and workmanship at the time of manufacture. This Limited Lifetime Warranty includes all components and fittings, except termination caps and Secure Black SW single wall black stove pipe. After installation, if covered components manufactured by SCIL are found to be defective in materials or workmanship during the Limited Lifetime Warranty period and while the Product remains at the site of the original installation, SCIL will, at its option, replace the covered components. SCIL reserves the right to replace covered components with an equivalent product and the replacement must be carried out in accordance with SCIL's recommendations. If replacement is not commercially practical, SCIL will, at its option, refund the purchase price or wholesale price of the SCIL product, whichever is applicable. THERE ARE EXCLUSIONS AND LIMITATIONS to this Limited Lifetime Warranty as described herein.

## COVERAGE COMMENCEMENT DATE

Warranty coverage begins on the date of installation. In the case of new home construction, warranty coverage begins on the date of first occupancy of the dwelling or six months after the sale of the Product by an independent SCIL dealer/distributor, whichever occurs earlier. The warranty shall commence no later than 24 months following the date of product shipment from SCIL, regardless of the installation or occupancy date.

## EXCLUSIONS AND LIMITATIONS

This Limited Lifetime Warranty applies only if the Product is installed in the United States or Canada and only if used for the application for which it was designed and intended. The Product must be maintained in accordance with the printed instructions accompanying the Product and in compliance with all applicable installation and building codes and good trade practices.

This warranty is transferable. The Product must be purchased through a listed supplier of SCIL and proof of purchase must be provided. SCIL will be responsible for the replacement of the residential vent and/or chimney system considered to be defective for the following periods:

Termination Caps & Secure Black SW Stove Pipe – Replacement at no charge for 5 years from the date of installation, excluding labor

Components and fittings (excludes termination caps and Secure Black SW) –

Year 1-15 – Replacement of all components and fittings (a labor allowance may apply to a maximum of 300 \$ \* certain conditions apply).

Year 16 – Replacement at 50% off of the prevailing list price in effect at the time of replacement (No labor allowance applies).

\*Labor Allowance Conditions: Any Warranty replacement work must be performed by a Professional Installer.

SCIL will not be responsible for: (a) damages caused by normal wear and tear, corrosion from salt air, accident, riot, fire, flood or acts of God; (b) damages caused by abuse, negligence, misuse, or unauthorized alteration or repair of the Product affecting its stability or performance. (The Product must be subject to normal use with approved fuels listed in the Operation Manual provided with the product. Where applicable, fuel products with abnormal burning characteristics, including but not limited to fuel such as driftwood, plywood and wood products using a binder may burn at excessive temperatures and may cause damage to the Product or may cause it to function improperly; (c) damages caused by failing to provide proper maintenance and service in accordance with the instructions provided with the Product; (d) damages, repairs or inefficiency resulting from faulty installation or application of the Product.

This Limited Lifetime Warranty covers only parts as provided herein. SCIL's entire liability is limited to the purchase price of this product. In no case shall SCIL be responsible for materials, components or construction which are not manufactured or supplied by SCIL or for the labor necessary to install, repair or remove such materials, components or construction. Additional utility bills incurred due to any malfunction or defect in equipment are not covered by this Limited Lifetime Warranty. All replacement or repair components will be shipped F.O.B. from the nearest stocking SCIL factory.

## LIMITATION ON LIABILITY

It is expressly agreed and understood that SCIL's sole obligation and the purchaser's exclusive remedy under this warranty, under any other warranty, expressed or implied, or in contract, tort or otherwise, shall be limited to replacement, repair, or refund, as specified herein.

In no event shall SCIL be liable for any incidental or consequential damages caused by defects in the Product, whether such damage occurs or is discovered before or after replacement or repair, and whether such damage is caused by SCIL's negligence. SCIL has not made and does not make any representation or warranty of fitness for a particular use or purpose, and there is no implied condition of fitness for a particular use or purpose. SCIL makes no expressed warranties except as stated in this Limited Lifetime Warranty. The duration of any implied warranty is limited to the duration of this expressed warranty.

No one is authorized to change this Limited Lifetime Warranty or to create for SCIL any other obligation or liability in connection with the Product. Some states and provinces do not allow the exclusion or limitation of incidental or consequential damages, so the above limitations or exclusions may not apply to you. The provisions of this Limited Lifetime Warranty are in addition to and not a modification of or subtraction from any statutory warranties and other rights and remedies provided by law.

## INVESTIGATION OF CLAIMS AGAINST WARRANTY

SCIL reserves the right to investigate any and all claims against this Limited Lifetime Warranty and to decide, in its sole discretion, upon the method of settlement.

To receive the benefits and advantages described in this Limited Lifetime Warranty, the appliance must be installed and repaired by a licensed contractor approved by SCIL. Contact SCIL at the address provided herein to obtain a listing of approved dealers/distributors. SCIL shall in no event be responsible for any warranty work done by a contractor that is not approved without first obtaining SCIL's prior written consent.

## HOW TO REGISTER A CLAIM AGAINST WARRANTY

In order for any claim under this warranty to be valid, you must contact the SCIL dealer/distributor from which you purchased the product. If you cannot locate the dealer/distributor, then you must notify SCIL in writing. SCIL must be notified of the claimed defect in writing within 90 days of the date of failure. Notices should be directed to the SCIL Warranty Department at 2125 Monterey Street, Laval, QC H7L 3T6.

[www.securitychimneys.com](http://www.securitychimneys.com)

**Security Chimneys**

2125 Monterey, Laval, Quebec  
Canada, H7L 3T6

450-973-9999

800-361-4909 (US)

800-667-3387 (Canada)

450-973-2222 (Fax)

Need product information or technical support? Our customer service specialists are ready to answer your questions:

800-667-3387 or contact

[infoeng@securitychimneys.com](mailto:infoeng@securitychimneys.com)



EASHTUS  
LS310\_Catalog\_Secure Temp ASHT\_07-21-17\_V2  
[www.securitychimneys.com](http://www.securitychimneys.com) **800-361-4909 (US)** **800-667-3387 (Canada)**

Security Chimneys International © 2015, 2017

Information published in all Security Chimneys literature is current at time of publication and is subject to change without notice.